

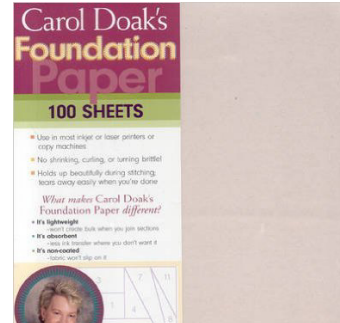
Paper Piecing Instructions and Recommendations

Recommended Tools:

The **Add-A-Quarter™** combines the speed of rotary cutting quilt pieces with the accuracy of using templates. Once your templates are made, the Add-A-Quarter™ will automatically add the customary 1/4" seam allowance to any straight angle and provide a straight edge for you rotary cutter.



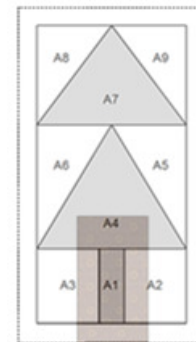
Carol Doak's Foundation Paper Lightweight - won't create bulk when you join sections. Absorbent - less ink transfer where you don't want it. Non-coated - fabric won't slip on it. Use in most inkjet or laser printers or copy machines. No shrinking, curling, or turning brittle. Holds up beautifully during stitching, tears away easily when you're done.



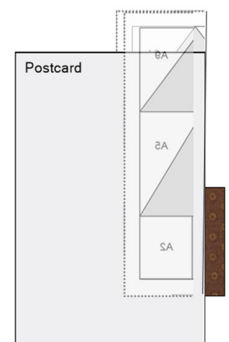
A new **needle** for your sewing machine.

Paper Piecing Basics

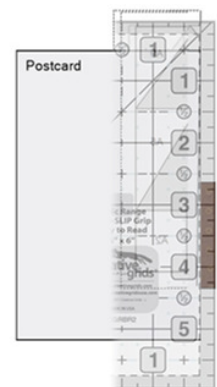
1. Use the cutting chart for each block, cut and label your fabric pieces.
2. Set up your sewing machine with a neutral color thread, and 18 to 20 stitches to the inch. That is about a 1.8 on a sewing machine that has a range of 0-5.
3. Select the A1 fabric piece and position it **RIGHT SIDE UP** on the **BLANK** side of the paper over the #1 area. Be sure that it covers the area completely with at least 1/4" all around the #1 area. Pin in place.
4. Place a postcard on the line between A1 and A2. Fold the paper over the edge of the postcard exposing the excess fabric beyond the #1 seam line.
5. Place the 1/4" line on a ruler along the edge of the fold and trim away the excess fabric. I personally love to use the Add-A-Quarter™ ruler for this step.
6. Place the A2 fabric right side down matching one edge to the just cut A1 fabric edge.



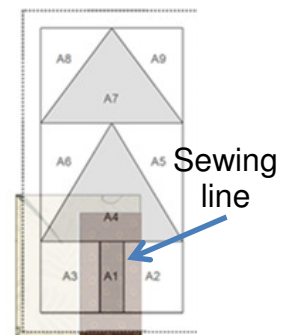
Step 3



Step 4

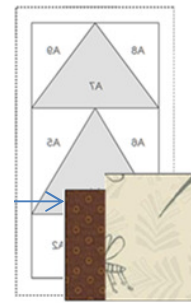


Step 5

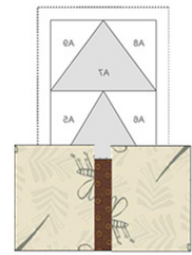


Steps 6-8

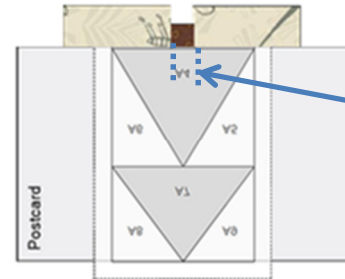
7. Confirm that the ends of A2 fabric will cover the A2 area and pin in place.
8. Place (with the printed side of the paper face up) under the presser foot and sew on the line, extending the stitches 1/4" on each end.
9. Remove and press the #2 piece.
10. Now, using piece A3, follow the same sequence of trimming, sewing and pressing as described in steps 4 through 9.
11. Repeat with piece A4. Note that when you place the postcard along some lines, you will need to pull away the stitching from the paper at the pointed end to fold over the card. However the stitching should remain in the seam allowances of the fabric.
12. Once the last piece has been sewn, the block should be trimmed 1/4" from the outside sewing line.



Step 9



Step 10



Step 11